

Product Name: Mum C-Section Scar Silicone Patches

Materials: Patches - Medical-Grade Silicone Gel
Patch Wrappers - Coated Medical Paper, PET/PE
Storage Board - PP

Contents: 3 x Thicker Patches - 50 x 200 x 1mm
3 x Thinner Patches - 50 x 200 x 0.5mm
1 x Storage Board - 157 x 225mm

Product Description:

Experience gentle coverage and daily comfort for your post-C-section care with Haakaa's Mum C-Section Scar Silicone Patches. Each of these patches offers soft yet secure support to protect your incision as you recover. With two thickness options, the thicker patch provides light compression during early recovery, while the thinner one offers discreet wear for later care.

Made from medical-grade silicone gel, each patch is individually wrapped, water-resistant, breathable, and reusable for up to 7 days. It helps to protect your scar from daily rubbing and offers compression even in the shower! They flex naturally with your body for a comfortable fit while keeping removal less irritating. The clear structure guarantees easy tracking of the healing process anytime. Each patch comes with a storage board to keep it hygienic and safe between uses, making them the cost-effective choice for your ongoing care.

Features:

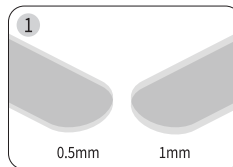
- Designed specifically for C-section mums to help with healthy scar formation while easing discomfort.
- Two thickness options to suit your needs as you recover.
- Thicker patch (1mm) provides gentle yet firm compression for early-stage scar care.
- Thinner patch (0.5mm) offers lightweight, discreet support during later stages of recovery.
- Made from soft, flexible and skin-friendly medical-grade silicone gel.
- Large size (200mm) provides full coverage and protection for C-section scars.
- Thin, transparent and breathable for comfortable, invisible wear in day-to-day life.
- Waterproof, hand washable, and can be used in the shower to protect skin from moisture.
- Gentle adhesive is safe and non-irritating, ideal on sensitive postpartum skin.
- Durable, reusable & cost-effective for ongoing care.
- Individually wrapped for hygienic, convenient use.
- Comes with a PP storage board for safe keeping and quick, easy reuse.

Cleaning and Care:

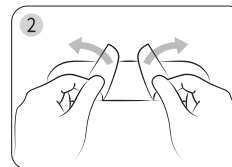
After use, hand wash gel patches in warm water gently, allow to air dry, then stick to the included PP storage board. Ensure there are no visible folds or lifted edges. Avoid using tissues or any material that may stick to or contaminate the patch. Dispose of the plastic film and used patches responsibly. Store in a cool, dry place and avoid direct sunlight. NOT suitable for any sterilisation methods. Patches should be discarded after 7 days use.

Instructions

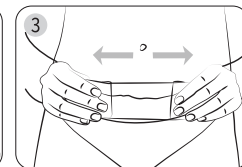
Before use: Ensure your incision is healed before use. Do not use until stitches/staples are gone. Clean and dry your hands and skin. Avoid applying ointments, lotions, oils, or any products that may affect the patch's adhesion before use.



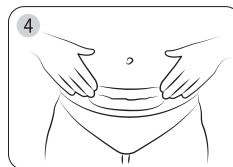
Choose the appropriate patch as needed. We recommend using the thicker patches to begin, then transitioning to the thinner patches.



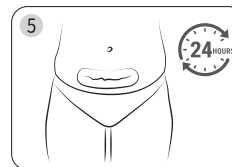
Slightly open the protective plastic film in the centre. Position the patch to follow the curve of your incision, then gently press to adhere.



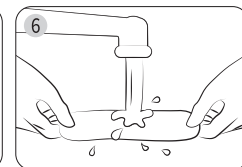
Carefully remove the rest of the protective film from each side.



Press and smooth, ensuring firm contact with the skin at all points. Make sure both edges are fully sealed with no lifting.



To help your skin adjust, start by wearing the patch for 2-4 hours. Increase the wear time every 2 days until you reach 24 hour continuous use if you feel comfortable.



Reuse for up to 7 days. Simply hand wash in warm water then store by sticking to the dedicated PP storage board. Replace patch as needed.

PLEASE NOTE: Each patch is reusable for up to 7 days. Replace sooner if you notice visible wear and tear, or if it loses adhesion.

Caution:

- Check product condition regularly. Replace if this product shows any signs of damage.
- For external use only.
- Adult use only. Always consult a medical professional before use.
- This product is not a toy. Keep out of reach of children and pets.
- Do not use this product for anything other than its intended use.
- Never use on open wounds; for use on healed areas only.
- For individual use only. Do not reuse these patches on others once opened.
- We do not recommend applying ointments, lotions or liquids before use, as they may affect adhesion and reduce the effectiveness of the patch.
- This product is not a medical device and is intended for daily comfort and care only.
- This product is intended for short-term water resistance during daily activities.
- For prolonged exposure to liquids, we recommend drying the area promptly.
- Some wrinkling during wear is normal and won't affect use. Gently readjust if wrinkles become excessive.
- Discontinue use if irritation, redness or discomfort occurs. Consult a healthcare professional if symptoms persist.
- Do not apply on open wounds, broken skin, or areas with eczema.
- Do not forcefully stretch this product.
- Do not store near any sharp objects.
- Dispose of responsibly.