

GEN. 2 SILICONE BREAST PUMP

PRODUCT MANUAL

English

Product Name: Gen. 2 Silicone Breast Pump

Material: Food Grade Silicone

Capacity: 100/150ml

Product Description:

The Haakaa Gen. 2 Silicone Breast Pump is made of a single piece of high-quality food grade silicone and provides an easy, eco-friendly and effective pumping experience! Forget large, loud and complicated electric pumps that cost hundreds and need to be pulled to pieces and cleaned thoroughly every time you use them - the Haakaa Silicone Breast Pump will change your life! Its compact size fits perfectly into any handbag or baby bag and requires no hard work to use.

The Haakaa Gen. 2 Silicone Breast Pump has a few added features to make your life that little bit easier. Available in two larger capacities of 100ml and 150ml and featuring a handy suction base that sticks to flat surfaces to prevent accidental spills, it is the easiest and most simple way to express breast milk.

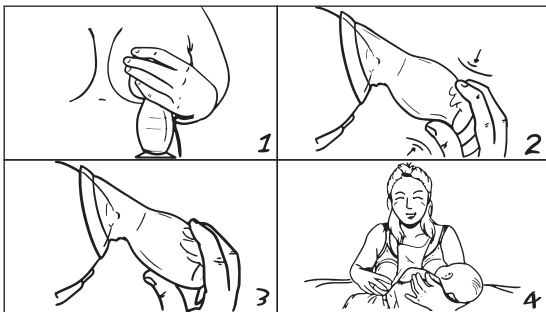
Our compact breast pump is perfect for long-distance trips, planes, car rides, family BBQs, or anywhere you would like to express discreetly, silently and quickly. Simply suction the pump to your breast and let it do the work for you as it draws your milk using natural suction. It's 100% eco-friendly and is safe for mum, baby and our environment.

Features:

- Draws milk out with continuous suction.
- Accommodates different breast sizes.
- Silent, with no cords or batteries required.
- Easy to use and clean.
- Suction base prevents accidental spills.
- Made of food grade silicone.
- BPA, PVC and phthalate-free.

Instructions for use:

1. Sterilise your pump by boiling in water for 2-3 minutes.
2. Place the pump flange over your nipple – make sure your nipple is centred comfortably in the neck of the pump.
3. Apply suction – you may need to adjust the position of your pump a couple of times. Once the pump is secure and comfortable, apply suction by squeezing the base of the pump to start the flow of milk.
4. Once milk begins to flow, simply leave the pump alone to do its thing!
5. When the pump is full, empty into a glass storage bottle and reposition.
6. If the flow of milk slows or you've expressed your desired amount, simply stick the suction base to a flat surface while you finish your feeding or redress.



Step-by-step diagram

Tips: Encourage let-down by placing a warm flannel on top of your breast and massaging gently. While your child is feeding, attach your Haakaa pump to the other breast to catch precious milk that would otherwise be lost in a nursing pad.

To get even more suction from your pump, fold back the flange to expose the neck of the pump. Centre the opening over your nipple and squeeze the pump as normal to generate suction. Once attached, return the flange to its original position.

Cleaning and Care:

Clean after each use. We strongly recommend cleaning and sterilising your Haakaa Silicone Breast Pump with any steam sterilising system or by boiling in water for 2-3 minutes. Do not use any bleach-based agents or sterilising tablets to clean this product. Do not use UV sterilisers to clean this product as it may impact the lifespan of your pump.

Caution:

Check product condition regularly. Replace if this product shows any signs of damage. Do not store near any sharp objects. Only soft bristle brushes or soft sponges should be used to clean this product as hard scourers may scratch the surface. Exposure to detergent may make the silicone in this product appear cloudy. This product is not a toy. Do not use this product for anything other than its intended use. Store product in a cool, dry place and avoid direct sunlight. Adult supervision is required.

Please note: Always follow your country's guidelines and recommendations for safely expressing and storing breast milk.