

haakaa®

SILICONE BREAST PUMP & FLOWER STOPPER SET

Product Manual English

Product Name: Gen. 2 Silicone Breast Pump & Flower Stopper Set

Material: Food-Grade Silicone

Dimensions: 100ml Gen. 2 Pump - 84 × 84 × 155mm
150ml Gen. 2 Pump - 84 × 84 × 170mm
Flower Stopper - 44 × 46 × 83mm

Flower Stopper Colours: Blue/Orange/Purple/Rose/White

Product Description:

If you're a breastfeeding mama, the Haakaa Gen. 2 Silicone Breast Pump is the perfect little essential to incorporate into your nursing journey.

Our one-piece pump is made of 100% food-grade silicone and sticks to any flat surface with its suction base. With a flower stopper that sits tightly in the neck of the pump to stop any accidental spills, it is the simplest way to express breastmilk.

Our pump is perfect for home and travel, including on planes, car rides, family gatherings, or anywhere else you want to express discreetly, silently and quickly. Simply suction to your breast and let the pump do the work for you! It's 100% eco-friendly and safe for mum, baby and our environment.

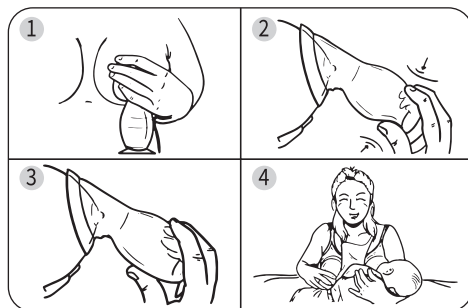
Features:

- Express breastmilk using the power of continuous suction!
- Soft and comfortable 100% food-grade silicone.
- Compact size fits perfectly into most handbags and baby bags.
- Fits a wide range of breast shapes and sizes.
- Silicone suction base prevents the pump from tipping over.
- No cords, batteries or assembly required.
- Silicone Stopper fits securely into the neck of your pump to keep the expressed milk safe from spills.
- Easy to use and clean.
- BPA, PVC and phthalate-free.

Instructions:

1. Sterilise your pump by using any steam steriliser or boiling in water for 2-3 minutes.
2. Place the pump flange over your nipple – make sure your nipple is centred comfortably in the neck of the pump.
3. Apply suction by squeezing the base of the pump then releasing. You may need to adjust the position of your pump to ensure it remains comfortable.
4. Once milk begins to flow, simply leave the pump alone to do its thing!
5. When the pump is full, empty into a clean, sterilised storage container or bottle and reposition.
6. If the flow of milk slows or you've expressed your desired amount, simply stick the suction base to a flat surface while your baby finishes feeding or you re-dress.

TIPS: Encourage let-down by placing a warm flannel on top of your breast and massaging gently. While your child is feeding, attach your Haakaa pump to the other breast to catch precious milk that would otherwise be lost in a nursing pad.



Step-by-step diagram

To get even more suction from your pump, fold back the flange to expose the neck of the pump. Centre the opening over your nipple and squeeze the pump as normal to generate suction. Once attached, return the flange to its original position.

Cleaning and Care:

Wash before and after each use. Although dishwasher safe, we recommend hand washing with warm, soapy water and rinsing thoroughly. To sterilise, use a steam steriliser or boil in water for 2-3 minutes. Only soft bristle brushes or soft sponges should be used to clean this product as hard scourers may scratch the surface. Do not use any bleach-based cleaners or tablets to clean or sterilise your Haakaa products. Store product in a cool dry place and avoid direct sunlight.

Caution:

- Check product condition regularly. Replace if this product shows any signs of damage.
- Adult use only.
- This product is not a toy. Do not use this product for anything other than its intended use.
- Keep out of reach of children and pets when not in use.
- Do not store near any sharp objects.

PLEASE NOTE: Always follow your country's guidelines and recommendations to safely express and store breastmilk. Volume measurements are an approximation and should be used for general reference only.