

FREEZE-N-SIP ICE CREAM MOULD SET

Product Manual

Product Name: Freeze-N-Sip Ice Cream Mould Set
Materials: Moulds, Straws - Food-Grade Silicone
 Secure Box - PP
 Tube Cleaning Brush - Nylon, PP, Stainless Steel
Dimensions: 2 x Ice Cream Cones - 63 x 63 x 96mm
 2 x Ice Cream Lids - 74 x 58 x 72mm
 2 x Silicone Straws - 8 x 8 x 100mm
 1 x Secure Box - 155 x 84 x 50mm
 1 x Tube Cleaning Brush - 21 x 10 x 141mm
Colours: Marigold/Slate Berry
Volume: 45-65ml
Recommended Age: 3 years+

Product Description:

Have fun making delicious homemade frozen treats with Haakaa's Freeze-N-Sip Ice Cream Mould Set! Made from 100% food-grade silicone, this set is soft, safe and perfect for those hot summer days. Best of all, it's amazingly easy to use! Pop the ice cream lid into the PP box, then fill to somewhere between the two measurement marks with your chosen ingredients. Attach the cone base, then pop the whole set in the freezer! Once it's frozen, you just need to remove the lid, and you've got an easy-to-hold frozen treat. Even better, if it melts, just pop the included straw in so you can drink it without any mess or fuss. Enjoy your own frozen goodies any time you choose with this adorable set!

Features:

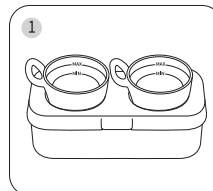
- Perfect for homemade treats.
- Moulds are made of soft and flexible 100% food-grade silicone.
- Smooth interior with a handle on the side of the ice cream lid for easy demoulding.
- Adorable ice cream cone mould fits little hands and catches drips.
- Wide opening for easy filling.
- Clear measurement marks for accurate portion control.
- Two-piece design that's easy to use and clean – simply boil to sterilise.
- Includes two straws to make melted treats easier to drink.
- Heat and freeze resistant.
- PP Secure Box helps with preparation and storage.
- Tube Cleaning Brush is ideal for small, hard-to-reach areas.
- BPA, PVC and phthalate-free.

Cleaning and Care:

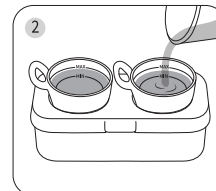
Clean before initial use, then after each use. Hand wash this product in warm, soapy water or put into dishwasher. Use the tube brush included to clean small areas and corners. Hand wash the brush with warm, soapy water and rinse. Brush **NOT** suitable for sterilising due to metal components. To sterilise non-metal parts, use a steam steriliser or boil in water for 2-3 minutes. Do not use bleach-based agents to clean this product. Silicone may absorb the colours of foods it comes in contact with. To minimise discolouring, wash immediately after use. Store product in a cool, dry place and avoid direct sunlight.

PLEASE NOTE: Please follow freshness guidelines for food when preparing and freezing. Use only ingredients suitable for ice treats and be mindful of potential allergens.

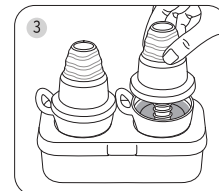
Instructions:



Clean both mould pieces and your hands, then place the silicone ice cream lid securely into the hole in the PP box, with the opening facing upwards.



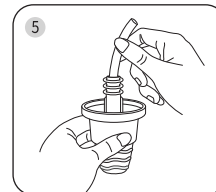
Pour the ingredients into the mould. Ensure the mould is filled between the two measurement lines inside (45-65ml) – do not exceed MAX line.



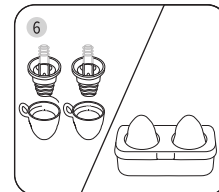
Turn the cone upside down and gently attach it to the lid, making sure there are no gaps around the edges. Once sealed, place it in the freezer until it solidifies.



Remove the mould from the container and hold the cone base. Carefully lift the side handle of the lid upwards or gently flip the edge. Your baby can hold the cone to enjoy their treat.



Alternatively, when the ice cream melts, pop the silicone straw into the centre hole to drink.



To store after cleaning, stack the two pieces and close the box lid. The centre tube can be pressed in for easier storage.

Caution:

- Always use this product with adult supervision.
- Before each use, inspect the product. Throw away at the first sign of damage or weakness.
- Continuous and prolonged sucking can affect dental health. Be sure to brush your child's teeth regularly.
- For your child's safety, never attach product to cords, ribbons, laces or loose parts of clothing, as it can become wrapped around their neck.
- This product is not a toy. Do not use this product for anything other than its intended use.
- Keep all components out of reach of children and pets when not in use.
- It's not recommended to refreeze leftover ice cream for second consumption.
- If stored for an extended period with the silicone tube folded down, pull out tube and allow it to regain its original form before use.