

CHILLY MONSTER ICE POP MOULD SET

Product Manual

Product Name: Chilly Monster Ice Pop Mould Set
Material: Food-Grade Silicone
Dimensions: 2 x Ice Pop Handles - 83 x 37 x 95mm
 2 x Ice Pop Containers - 102 x 37 x 46mm
Colours: Blush + Pea Green/Sky Blue + Mustard
Recommended Age: 6 months+
Standard: EN 14372

Product Description:

Treat time just got cuter than ever with the Chilly Monster Ice Pop Mould Set! The perfect set for babies who are starting to teethe (or just for anyone who wants an adorable frozen treat!), these ice pop moulds are made from soft, safe, 100% food-grade silicone. Easy to fill and even easier to clean, they're a great way to soothe teething gums or cool down on those hot summer days. Even better, because these moulds are gentle and non-toxic, they're able to double as a teether even after your little one has finished eating! Simply fill it with the ingredients you wish to freeze, pop in the handle, and leave it in the freezer. Grab them when it's time for your homemade goodies and remove the ice pop from the mould! Any time you need some cooling relief for your little one, the Chilly Monster Ice Pop Mould Set is the ideal option.

Features:

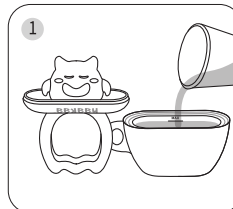
- Perfect for teething babies who are starting solids.
- Made of soft and flexible 100% food-grade silicone.
- Adorable chilly monster mould fits little hands and catches drips.
- The handle doubles as a teether to soothe sore gums.
- Wide opening for easy filling.
- Smooth interior with a handle on the side of the ice pop container for easy demoulding.
- Two-piece design that's easy to use and clean - simply boil to sterilise.
- Heat and freeze resistant.
- BPA, PVC and phthalate-free.

Cleaning and Care:

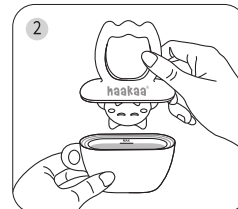
Clean before initial use, then after each use. Hand wash this product in warm, soapy water or put into dishwasher. To sterilise, use a steam steriliser or boil in water for 2-3 minutes. Do not use any bleach-based cleaners or tablets to sterilise or clean your Haakaa products. Silicone may absorb the colours of foods it comes in contact with. To minimise discolouring, wash immediately after use. Store product in a cool, dry place and avoid direct sunlight.

PLEASE NOTE: Please follow freshness and safe feeding guidelines when preparing and freezing food. Use only ingredients suitable for ice treats and be mindful of potential allergens.

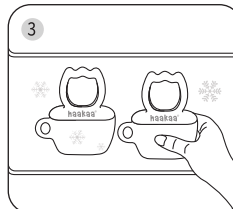
Instructions:



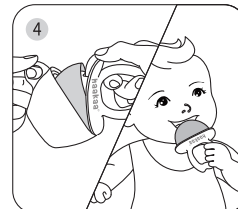
Clean the mould before use. Place ingredients inside the container and do not exceed the MAX line.



Insert the handle into the container. Make sure there are no gaps between the parts.



Carefully put the mould into the freezer.



Once frozen, carefully lift the handle upwards or gently flip the edge. Your baby can hold the handle to enjoy their treat.

Caution:

For your child's safety and health WARNING!

- Always use this product with adult supervision.
- Before each use, inspect the product. Throw away at the first sign of damage or weakness.
- Continuous and prolonged sucking can affect dental health. Be sure to brush your child's teeth regularly.
- For your child's safety, never attach product to cords, ribbons, laces or loose parts of clothing, as it can become wrapped around their neck.
- This product is not a toy. Do not use this product for anything other than its intended use.
- Keep all components out of reach of children and pets when not in use.
- It's not recommended to refreeze leftover ice cream for second consumption.
- Avoid placing this product laying flat in the fridge/freezer. This might cause contents to leak.
- Always check food temperature before feeding.